

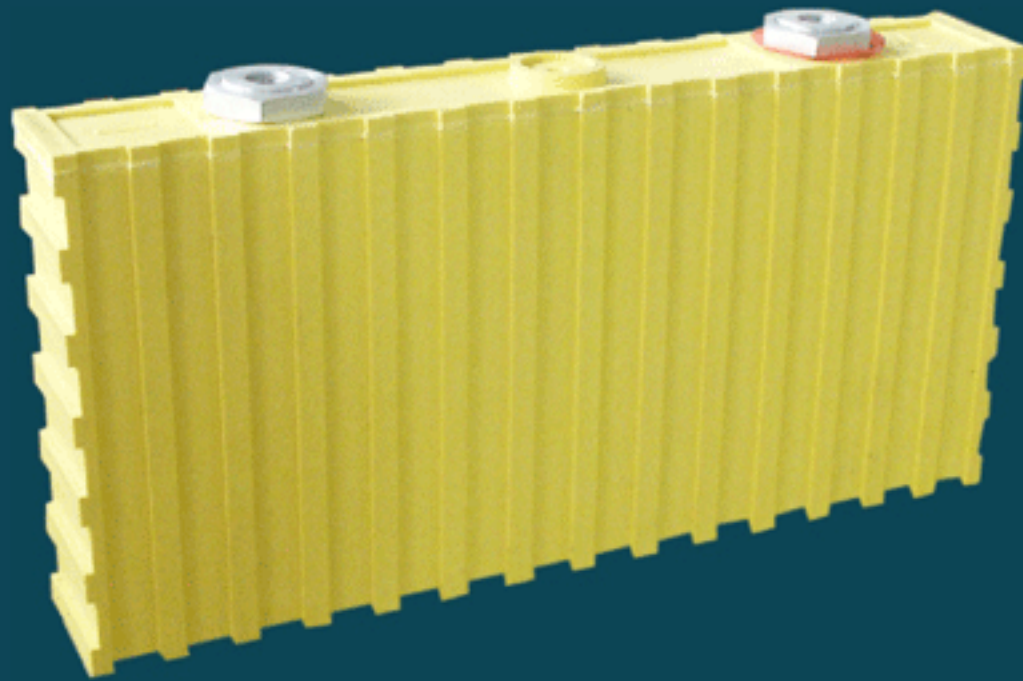


# Winston Battery

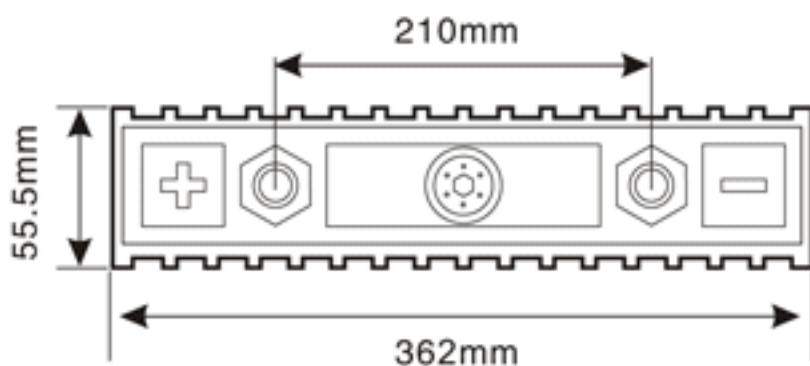
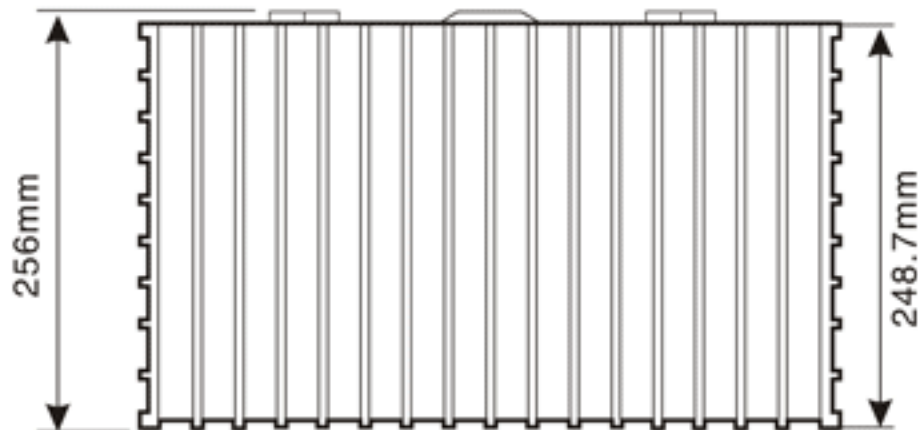
Address: Winston Industrial Park, Third Industrial Zone, Lisongjiang Village,  
Gongming Town, Shenzhen, Guangdong P.R.C  
Tel: +86-755-8602 6789 Fax: +86-755-8602 6678  
Http: //www.winston-battery.com E-mail: winston@winston-battery.com

## 温斯顿牌稀土锂钇动力电池性能说明 SPECIFICATION FOR WINSTON RARE EARTH LITHIUM YTTRIUM POWER BATTERY

### 單體電池尺寸 DIMENSIONS



型號(MODEL): WB-LYP200AHA



### 技術參數 SPECIFICATIONS

#### 型號(MODEL): WB-LYP200AHA

標稱容量 Nominal Capacity	200Ah	
工作電壓 Operation Voltage	充電 (Charge)	4.0V
	放電 (Discharge)	2.8V
最大充電電流 Max Charge Current	≤3CA	
最大放電電流 Max Discharge Current	恒電流 (Constant Current)	≤3CA
	脈衝式 (Impulse Current)	≤20CA
標準充放電電流 Standard Charge/Discharge Current	0.5CA	
循環壽命 Cycle Life	(80DOD%)	≥3000Times
	(70DOD%)	≥5000Times
殼體耐溫性 Temperature Durability Of Case	≤200°C	
適應環境 Operating Temperature	充電 (Charge)	-45°C~85°C
	放電 (Discharge)	-45°C~85°C
自放電率(月) Self-discharge Rate	≤3% (Monthly)	
單體電池重量 Weight	7.3kg ± 100g	

# WB-LYP200AHA型電池的充放電特性

## WB-LYP200AHA CHARGE & DISCHARGE CHART

